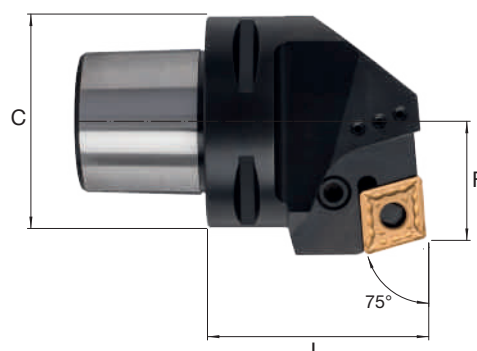
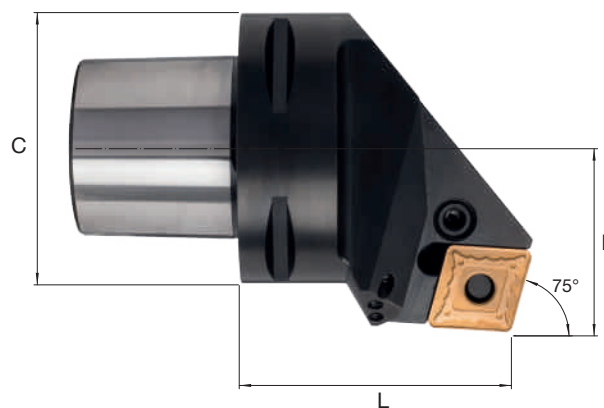


**PORTAINSERTI PER LAVORAZIONE INTERNA ED ESTERNA****TOOL HOLDER FOR INTERNAL AND EXTERNAL MACHINING  
KLEMMHALTER FÜR INNENBEARBEITUNG UND AUSSENBEARBEITUNG****C... PCBNR/L... 75°****ISO26623-1**TAILOR  
MADE

CODICE CODE	R	N	L	RICAMBI / SPARE PARTS / ERSATZTEILE				INSERTI INSERTS WSP	C	L	F
<b>C63 PCBNR/L 35065 19</b>	●	-	●	LV60	VTL60	GPCN19	SPE60	CN...19...	63	65	35
<b>C80 PCBNR/L 55080 19</b>	●	-	●	LV60	VTL60	GPCN19	SPE60	CN...19...	80	80	55
<b>C80 PCBNR/L 55080 25</b>	●	-	●	LV70	VTL90	GPCN25	SPE70	CN...2509...	80	80	55

**C... PCKNR/L... 75°****ISO26623-1**TAILOR  
MADE

CODICE CODE	R	N	L	RICAMBI / SPARE PARTS / ERSATZTEILE				INSERTI INSERTS WSP	C	L	F
<b>C80 PCKNR/L 55080 19</b>	●	-	●	LV60	VTL60	GPCN19	SPE60	CN...19...	80	80	55
<b>C80 PCKNR/L 55080 25</b>	●	-	●	LV70	VTL90	GPCN25	SPE70	CN...2509...	80	80	55

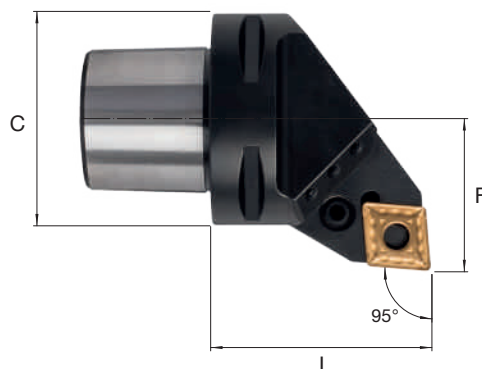
**ESEMPIO DI ORDINE:**

Order example:

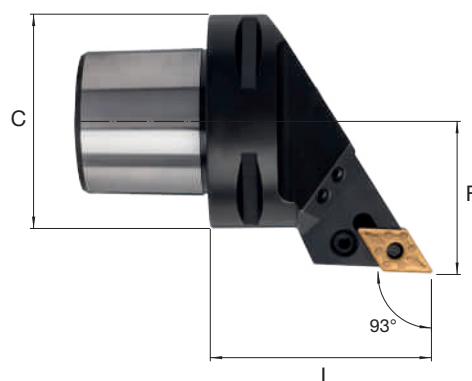
Beispiel für einen Auftrag:

**C80 PCKNR 55080 25**

- Disponibile / In stock / vorrätig
- A richiesta / On request / auf Anfrage

**PORTAINSERTI PER LAVORAZIONE INTERNA ED ESTERNA****TOOL HOLDER FOR INTERNAL AND EXTERNAL MACHINING****KLEMMHALTER FÜR INNENBEARBEITUNG UND AUSSENBEARBEITUNG****C... PCLNR/L... 95°****ISO26623-1**

CODICE CODE	R	N	L	RICAMBI / SPARE PARTS / ERSATZTEILE				INSERTI INSERTS WSP	C	L	F
<b>C40 PCLNR/L 27050 12</b>	●	-	●	LV43	VTL43	GPCN12	SPE30	CN...1204...	40	50	27
<b>C50 PCLNR/L 35060 12</b>	●	-	●	LV43	VTL43	GPCN12	SPE30	CN...1204...	50	60	35
<b>C63 PCLNR/L 45065 12</b>	●	-	●	LV43	VTL43	GPCN12	SPE30	CN...1204...	63	65	45
<b>C63 PCLNR/L 45065 16</b>	●	-	●	LV52	VTL52	GPCN16	SPE50	CN...1606...	63	65	45
<b>C63 PCLNR/L 45065 19</b>	●	-	●	LV60	VTL60	GPCN19	SPE60	CN...19...	63	65	45
<b>C80 PCLNR/L 55080 19</b>	●	-	●	LV60	VTL60	GPCN19	SPE60	CN...19...	80	80	55
<b>C80 PCLNR/L 55080 25</b>	●	-	●	LV70	VTL90	GPCN25	SPE70	CN...2509...	80	80	55

**C... PDJNR/L... 93°****ISO26623-1**

CODICE CODE	R	N	L	RICAMBI / SPARE PARTS / ERSATZTEILE				INSERTI INSERTS WSP	C	L	F
<b>C50 PDJNR/L 35060 15</b>	●	-	●	LV82	VTL43	GPDN15	SPE30	DN...1506...	50	60	35
<b>C63 PDJNR/L 45065 15</b>	●	-	●	LV82	VTL43	GPDN15	SPE30	DN...1506...	63	65	45

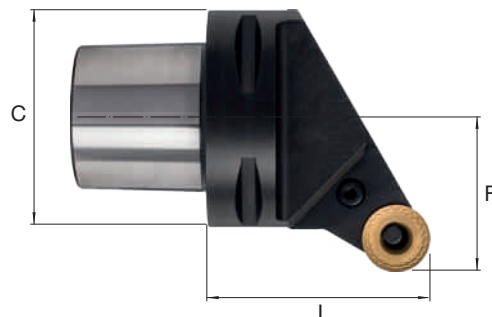
**ESEMPIO DI ORDINE:**

Order example:

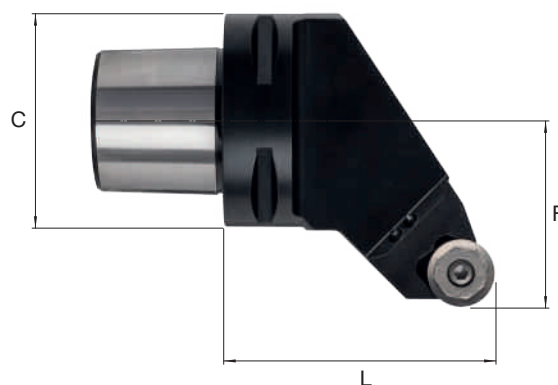
Beispiel für einen Auftrag:

**C63 PDJNL 45065 15**

- Disponibile / In stock / vorrätig
- A richiesta / On request / auf Anfrage

**PORTAINSERTI PER LAVORAZIONE INTERNA ED ESTERNA****TOOL HOLDER FOR INTERNAL AND EXTERNAL MACHINING****KLEMMHALTER FÜR INNENBEARBEITUNG UND AUSSENBEARBEITUNG****C... PRSCR/L...****ISO26623-1**TAILOR  
MADE

CODICE CODE	R	N	L	RICAMBI / SPARE PARTS / ERSATZTEILE				INSERTI INSERTS WSP	C	L	F
<b>C63 PRSCR/L 45065 16</b>	●	-	●	LV51	VTL50	GPRC16	SPE40	RC...1606...	63	65	45
<b>C63 PRSCR/L 45065 20</b>	●	-	●	LV61	VTL53	GPRC20	SPE50	RC...2006...	63	65	45
<b>C80 PRSCR/L 55080 20</b>	●	-	●	LV61	VTL53	GPRC20	SPE50	RC...2006...	80	80	55
<b>C80 PRSCR/L 55080 25</b>	●	-	●	LV71	VTL80	GPRC25	SPE60	RC...2507...	80	80	55

**C... SRSPR/L...****ISO26623-1**TAILOR  
MADE

CODICE CODE	R	N	L	RICAMBI / SPARE PARTS / ERSATZTEILE				INSERTI INSERTS WSP	C	L	F
<b>C63 SRSPR/L 45065 16</b>	●	-	●			VTA20		RP...1605...	63	65	45
<b>C63 SRSPR/L 55080 20</b>	●	-	●			VTA23		RP...2006...	63	80	55
<b>C80 SRSPR/L 55080 20</b>	●	-	●			VTA23		RP...2006...	80	80	55

**ESEMPIO DI ORDINE:**

Order example:

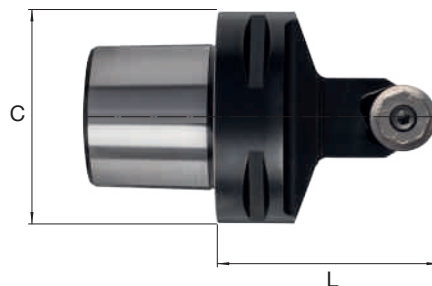
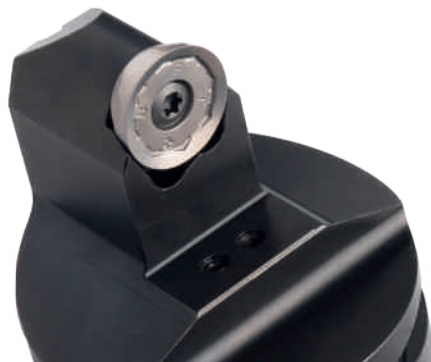
Beispiel für einen Auftrag:

**C80 SRSPR 55080 20**

- Disponibile / In stock / vorrätig
- A richiesta / On request / auf Anfrage

**PORTAINSERTI PER LAVORAZIONE INTERNA ED ESTERNA****TOOL HOLDER FOR INTERNAL AND EXTERNAL MACHINING****KLEMMHALTER FÜR INNENBEARBEITUNG UND AUSSENBEARBEITUNG****C... PRDCN...****ISO26623-1**

CODICE CODE	R	N	L	RICAMBI / SPARE PARTS / ERSATZTEILE				INSERTI INSERTS WSP	C	L	F
<b>C63 PRDCN 00065 16</b>	-	●	-	LV51	VTL50	GPRC16	SPE40	RC...1606...	63	65	-
<b>C63 PRDCN 00065 20</b>	-	●	-	LV61	VTL53	GPRC20	SPE50	RC...2006...	63	65	-
<b>C80 PRDCN 00080 20</b>	-	●	-	LV61	VTL53	GPRC20	SPE50	RC...2006...	80	80	-
<b>C80 PRDCN 00080 25</b>	-	●	-	LV71	VTL80	GPRC25	SPE60	RC...2507...	80	80	-

**C... SRDPN...****ISO26623-1**

CODICE CODE	R	N	L	RICAMBI / SPARE PARTS / ERSATZTEILE	INSERTI INSERTS WSP	C	L	F
<b>C63 SRDPN 00065 16</b>	-	●	-	VTA20	RP...1605...	63	65	-
<b>C63 SRDPN 00065 20</b>	-	●	-	VTA23	RP...2006...	63	65	-
<b>C80 SRDPN 00080 20</b>	-	●	-	VTA23	RP...2006...	80	80	-

**ESEMPIO DI ORDINE:**

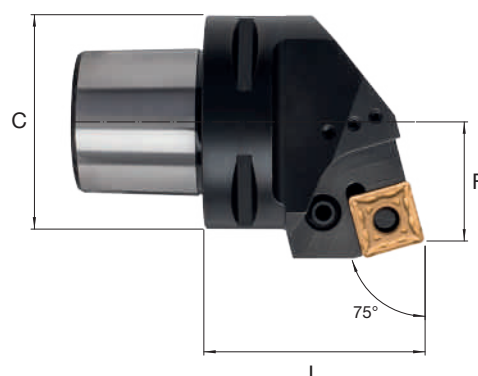
Order example:

Beispiel für einen Auftrag:

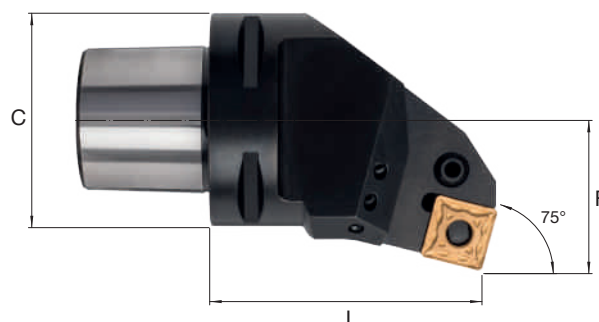
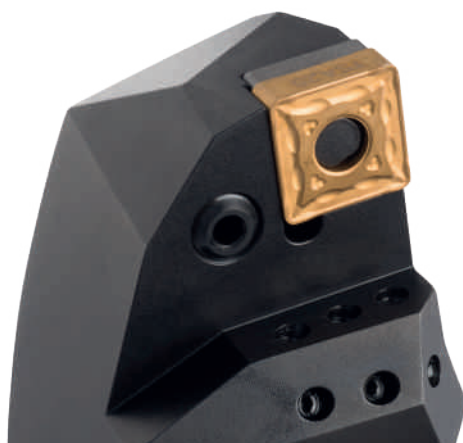
**C80 SRDPN 00080 20**

● Disponibile / In stock / vorrätig

○ A richiesta / On request / auf Anfrage

**PORTAINSERTI PER LAVORAZIONE INTERNA ED ESTERNA****TOOL HOLDER FOR INTERNAL AND EXTERNAL MACHINING****KLEMMHALTER FÜR INNENBEARBEITUNG UND AUSSENBEARBEITUNG****C... PSB NR/L...****75°****ISO26623-1****TAILOR MADE**

CODICE CODE	R	N	L	RICAMBI / SPARE PARTS / ERSATZTEILE				INSERTI INSERTS WSP	C	L	F
<b>C63 PSB NR/L 35065 19</b>	●	-	●	LV60	VTL60	GPSN19	SPE60	SN...19...	63	65	35
<b>C80 PSB NR/L 45080 19</b>	●	-	●	LV60	VTL60	GPSN19	SPE60	SN...19...	80	80	45
<b>C80 PSB NR/L 45080 25</b>	●	-	●	LV70	VTL90	GPSN25	SPE70	SN...2509...	80	80	45

**C... PSK NR/L...****75°****ISO26623-1****TAILOR MADE**

CODICE CODE	R	N	L	RICAMBI / SPARE PARTS / ERSATZTEILE				INSERTI INSERTS WSP	C	L	F
<b>C63 PSK NR/L 45080 19</b>	●	-	●	LV60	VTL60	GPSN19	SPE60	SN...19...	63	80	45
<b>C80 PSK NR/L 55080 19</b>	●	-	●	LV60	VTL60	GPSN19	SPE60	SN...19...	80	80	55
<b>C80 PSK NR/L 55080 25</b>	●	-	●	LV70	VTL90	GPSN25	SPE70	SN...2509...	80	80	55

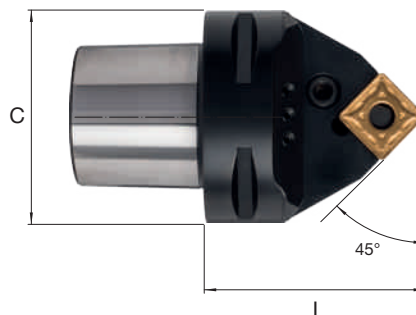
**ESEMPIO DI ORDINE:**

Order example:

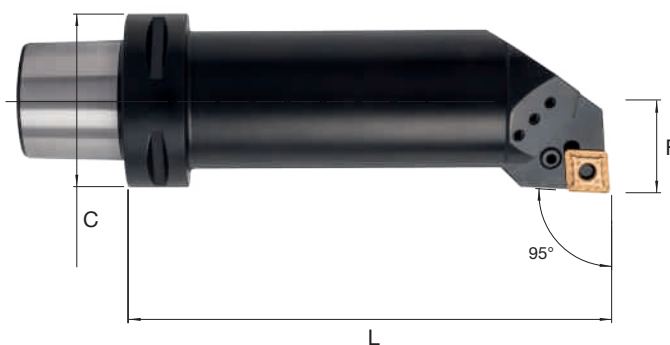
Beispiel für einen Auftrag:

**C80 PSK NL 55080 25**

- Disponibile / In stock / vorrätig
- A richiesta / On request / auf Anfrage

**PORTAINSERTI PER LAVORAZIONE INTERNA ED ESTERNA****TOOL HOLDER FOR INTERNAL AND EXTERNAL MACHINING****KLEMMHALTER FÜR INNENBEARBEITUNG UND AUSSENBEARBEITUNG****C... PSDNN...****45°****ISO26623-1**TAILOR  
MADE

CODICE CODE	R	N	L	RICAMBI / SPARE PARTS / ERSATZTEILE				INSERTI INSERTS WSP	C	L	F
<b>C63 PSDNN 00065 19</b>	●	-	●	LV60	VTL60	GPSN19	SPE60	SN...19...	63	65	-
<b>C80 PSDNN 00080 19</b>	●	-	●	LV60	VTL60	GPSN19	SPE60	SN...19...	80	80	-
<b>C80 PSDNN 00080 25</b>	●	-	●	LV70	VTL90	GPSN25	SPE70	SN...2509...	80	80	-

**C... PCLNR/L...****95°****ISO26623-1**TAILOR  
MADE

CODICE CODE	R	N	L	RICAMBI / SPARE PARTS / ERSATZTEILE				INSERTI INSERTS WSP	C	L	F
<b>C50 PCLNR/L 22110 12</b>	●	-	●	LV43	VTL43	GPCN12	SPE30	CN...1204...	50	110	22
<b>C50 PCLNR/L 27140 12</b>	●	-	●	LV43	VTL43	GPCN12	SPE30	CN...1204...	50	140	27
<b>C63 PCLNR/L 27140 16</b>	●	-	●	LV52	VTL52	GPCN16	SPE50	CN...1606...	63	140	27
<b>C63 PCLNR/L 35175 16</b>	●	-	●	LV52	VTL52	GPCN16	SPE50	CN...1606...	63	175	35

**ESEMPIO DI ORDINE:**

Order example:

Beispiel für einen Auftrag:

**C63 PCLNR 35175 16**

● Disponibile / In stock / vorrätig

○ A richiesta / On request / auf Anfrage

**PORTAINSERTI PER LAVORAZIONE INTERNA ED ESTERNA****TOOL HOLDER FOR INTERNAL AND EXTERNAL MACHINING****KLEMMHALTER FÜR INNENBEARBEITUNG UND AUSSENBEARBEITUNG****C... PCMNN...****50°****ISO26623-1**TAILOR  
MADE

CODICE CODE	R	N	L	RICAMBI / SPARE PARTS / ERSATZTEILE				INSERTI INSERTS WSP	C	L	F
<b>C63 PCMNN 00090 12</b>	●	-	●	LV43	VTL43	GPCN12	SPE30	CN...1204...	63	90	-
<b>C63 PCMNN 00115 12</b>	●	-	●	LV43	VTL43	GPCN12	SPE30	CN...1204...	63	115	-
<b>C63 PCMNN 00090 16</b>	●	-	●	LV43	VTL43	GPCN12	SPE30	CN...1606...	63	90	-

**C... PTFNR/L...****90°****ISO26623-1**TAILOR  
MADE

CODICE CODE	R	N	L	RICAMBI / SPARE PARTS / ERSATZTEILE				INSERTI INSERTS WSP	C	L	F
<b>C50 PTFNR/L 27140 16</b>	●	-	●	LV30	VTL30	GPTN16	SPE20	TN...1604...	50	140	27
<b>C63 PTFNR/L 33175 22</b>	●	-	●	LV43	VTL43	GPTN22	SPE30	TN...2204...	63	175	33

**ESEMPIO DI ORDINE:**

Order example:

Beispiel für einen Auftrag:

**C63 PTFNR 33175 22**

- Disponibile / In stock / vorrätig
- A richiesta / On request / auf Anfrage