

TJ200 EP



FRESA PER ALTI AVANZAMENTI

High feed milling cutter

Hochvorschubfräser



Ø 10 ÷ 32

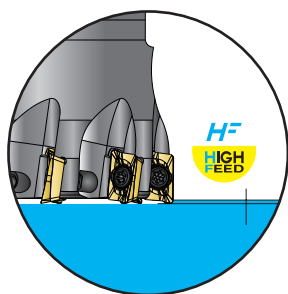
Soluzione all'avanguardia per la fresatura ad alti avanzamenti

The most advanced stage in the high feed milling

Innovative Lösung für Fräsen bei hohem Vorschub Trennbearbeitung

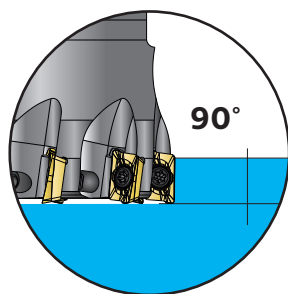


High
Quality
STEEL



HF
HIGH
FEED

A_p MAX | 0,7
 F_z MAX | 0,7



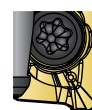
90°

A_p MAX | 5,2
 F_z MAX | 0,15

Raggio di programmazione

Programming radius

Programmierradius



$R_{TH} = 1,2/2$



ANGOLO DI RAMPA

Ramp angle

Rampenwinkel

Diametro della fresa Milling cutter diameter Fräserdurchmesser	HF	90°
Ø 10	6,3°	8,4°
Ø 12	4,5°	6,3°
Ø 16	3,5°	5,0°
Ø 20	1,8°	2,3°
Ø 25	1,5°	1,8°
Ø 32	1,1°	1,3°

EPMT



Fori di
lubrorefrigerazione
Coolant holes
Kühlmittelbohrungen

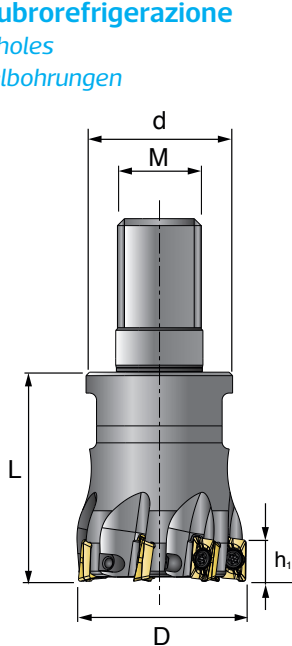


TJ200 EP FRESA PER ALTI AVANZAMENTI
High feed milling cutter
Hochvorschubfräser

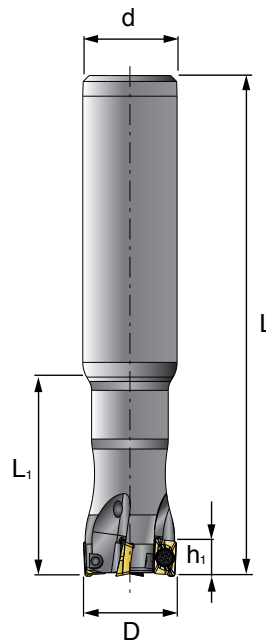
FRESE AD INSERTI
MILLING CUTTERS WITH INSERTS
WENDEPLATTEN-FRÄSWERKZEUGE



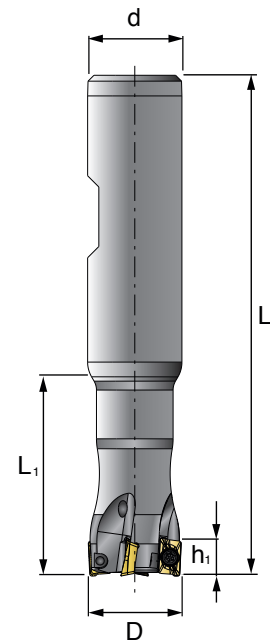
Con fori di lubrorefrigerazione
With coolant holes
mit Kühlmittelbohrungen





TJ200 TM



TJ200 PC

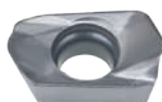


TJ200 PW

CODICE CODE	DIMENSIONI / DIMENSIONS / MAßE							INSERTO INSERT WSP		
	D	Z	L	L ₁	h ₁	d	M			
TJ200 TM 06 010.EP07 Z2 W	10	2	15,5	-	5,2/0,7	9,8	6	EPMT 0720...	VTJ207	CVT6P
TJ200 TM 06 012.EP07 Z3 W	12	3	15,5	-	5,2/0,7	9,8	6			
TJ200 TM 08 016.EP07 Z4 W	16	4	20,5	-	5,2/0,7	13,8	8			
TJ200 TM 10 020.EP07 Z5 W	20	5	27	-	5,2/0,7	18	10			
TJ200 TM 12 025.EP07 Z5 W	25	7	30	-	5,2/0,7	21	12			
TJ200 TM 16 032.EP07 Z8 W	32	8	43	-	5,2/0,7	29	16			
TJ200 PC 010.EP07 Z2 W	10	2	80	28	5,2/0,7	10	-	EPMT 0720...	VTJ207	CVT6P
TJ200 PC 012.EP07 Z3 W	12	3	80	30	5,2/0,7	12	-			
TJ200 PW 016.EP07 Z4 W	16	4	85	35	5,2/0,7	16	-	EPMT 0720...	VTJ207	CVT6P
TJ200 PW 020.EP07 Z5 W	20	5	90	40	5,2/0,7	20	-			
TJ200 PW 025.EP07 Z7 W	25	7	106	50	5,2/0,7	25	-			

Inserti per fresa TJ200 EP

Inserts for TJ200 EP milling cutter / WSP für TJ200 EP Fräser



CODICE CODE	DIMENSIONI DIMENSIONS MAßE				P	M	K	S	H
	L	S	R	R _{Th}					
EPMT 070210	5,8	2,16	1,0	1,2	CPX35 CPS35	CPX35			
EPMT 070220	5,8	2,16	2,0	2,0	CPH30				CPH30